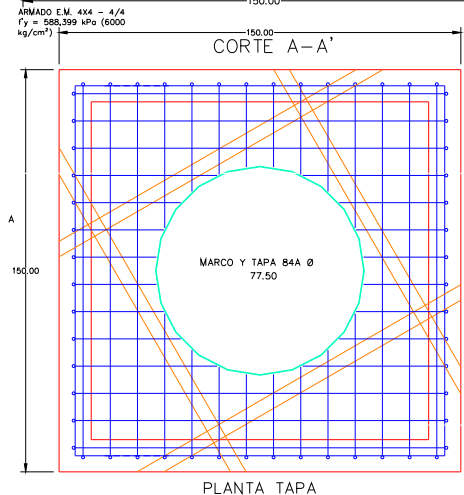
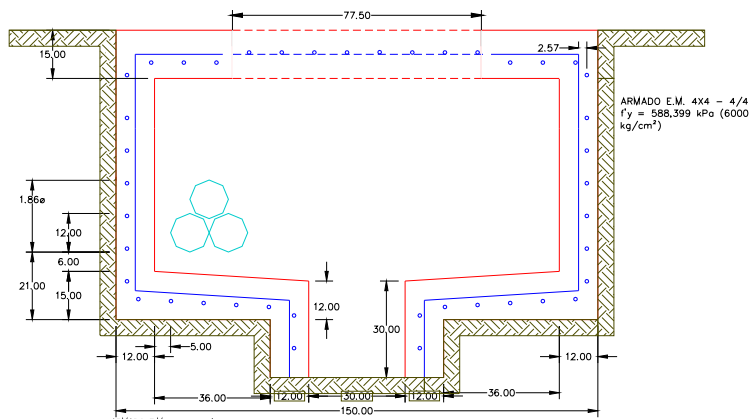
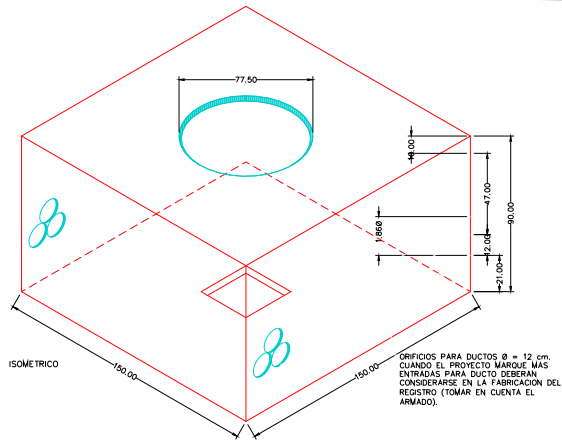








CFE-RMTA-4



VARILLA DE 1/2" DE ϕ
PARA REFUERZO DEL BROCAL
 $f_y = 41879.3$ kPa (4,200 kg/cm²) ϕ 5 cm.

ESPECIFICACIONES

-  CONCRETO F' C= 200 KG/CM2
-  REFUERZO CON MALLA ELECTROSOLDADA 4X4-4/4(6,000 KG/CM2)EN MUROS, PISO Y LOSA
-  MUROS DE 12 CM DE ESPESOR CON ACABADO CEMENTO PULIDO
-  MARCO Y TAPA 84-A DE CONCRETO POLIMERICO Y AGARRADERAS GALVANIZADAS
-  LOSA DE 15 CM DE GROSOR REFORZADA CON VARILLAS DE 1/2"
-  PESO APROXIMADO 2,850 KG

