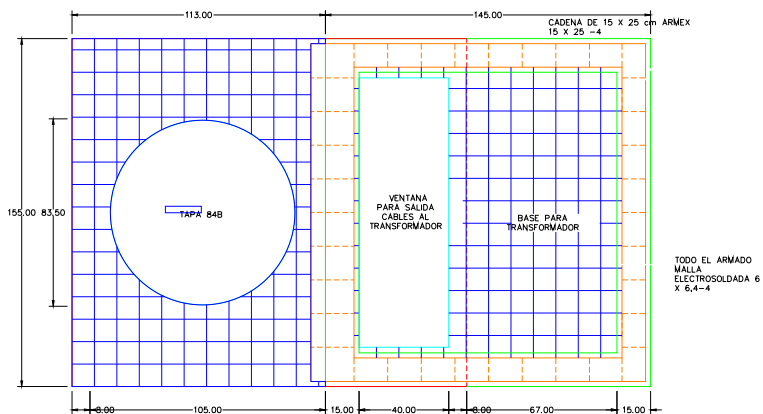
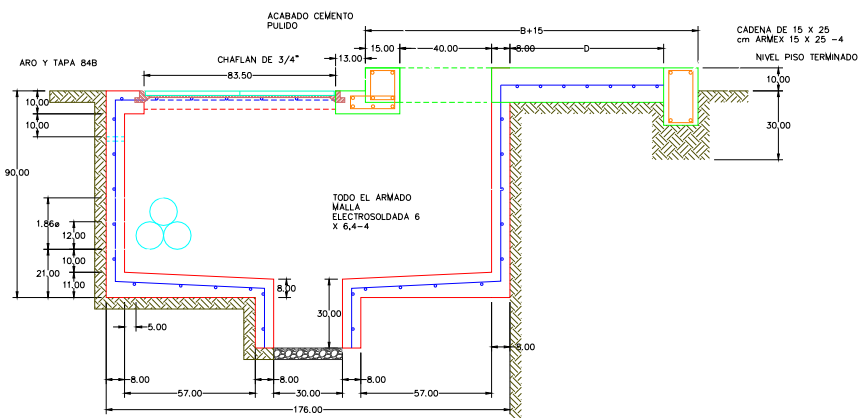
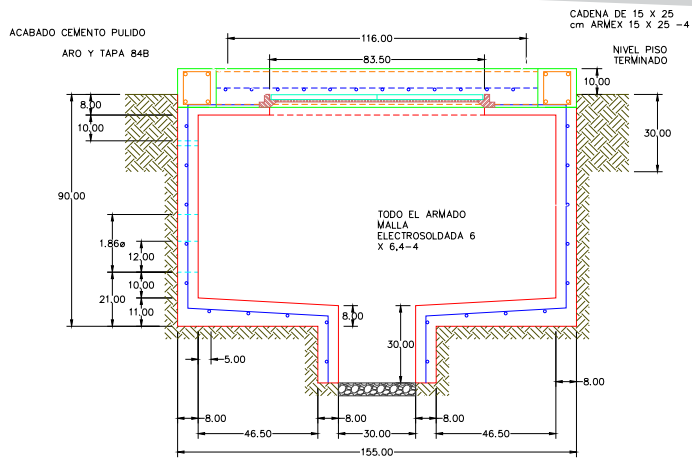









CFE-BTTRMTB-4



ESPECIFICACIONES

-  CONCRETO F' C= 200 KG/CM2
-  REFUERZO CON MALLA ELECTROSOLDADA 6X6-4/4(6,000 KG/CM2)EN MUROS, PISO Y LOSAS
-  MUROS DE 10 CM DE ESPESOR CON ACABADO CEMENTO PULIDO
-  MARCO Y TAPA 84-B DE CONCRETO POLIMERICO Y AGARRADERAS GALVANIZADAS
-  LOSA DE 10 CM DE GROSOR REFORZADA CON VARILLAS DE 1/2"
-  DISPONIBLE SIN LOSA P/TRANSFORMADOR
-  PESO APROXIMADO 3,100 KG

